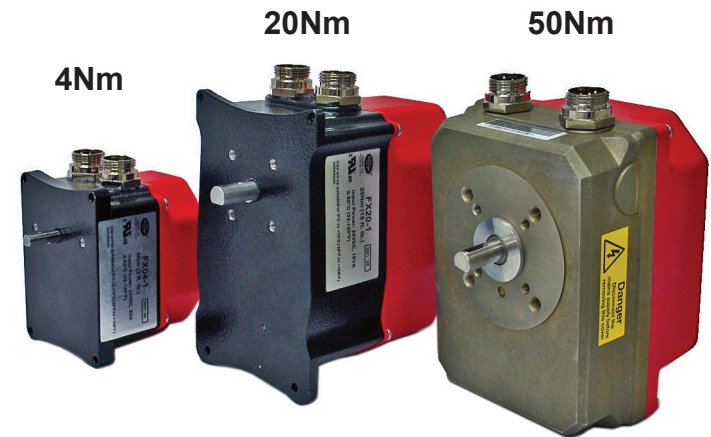


Servo Type	FX04-1	FX20-1	FX50-1
Supply Voltage:	24VDC +/-10%,	24VDC +/-10%,	24VDC +/-10%,
Nominal Torque:	3 lbs-ft/4Nm	15 lbs-ft/20Nm	37 lbs-ft/50Nm
Holding Torque	>3 lbs-ft/4Nm	8 lbs-ft/10Nm	19 lbs-ft/ 20Nm
Power Consumption:	5 VA Nominal	15 VA Nominal	20 VA Nominal
Working Temperature Range:	32°F-140°F/0°C to +60°C, 100% duty cycle	32°F-140°F/0°C to +60°C, 100% duty cycle	32°F-140°F/0°C to +60°C, 100% duty cycle
Protection Category:	NEMA 4 / IP 65	NEMA 4 / IP 65	NEMA 4 / IP 65
Maximum Angle Rotation:	100°	100°	100°
Rotation Limits:	Software	Software	Software
Feedback Potentiometer:	Single turn conductive plastic, 1KΩ +/- 1% linearity	Single turn conductive plastic, 1KΩ +/- 1% linearity	Single turn conductive plastic, 1KΩ +/- 1% linearity
Nominal Dimensions:	4.59" (116.8mm) high x 3.27" (83.1mm) wide x 4.91" (124.7mm) deep	6.51" (165.4mm) high x 4.08" (103.5mm) wide x 7.24" (183.7mm) deep	5.36" (136mm) high x 4.76" (121mm) wide x 7.31" (185.8mm) deep
Weight:	2.27 lb / 1.03 kg	5.43 lb / 2.46 kg	6.10 lb / 2.77 kg
Installation Position:	Any	Any	Any

NXF4000/PPC4000 Positioning Servos



The Combustion Control Specialists

3 Manchester Rd. • Derry, NH 03038 • USA
 Tel: 603 - 432 - 4100 • Fax: 603 - 432 - 1570
www.fireeye.com

NXF4000/PPC4000 O2 PROBE

FEATURES/BENEFITS

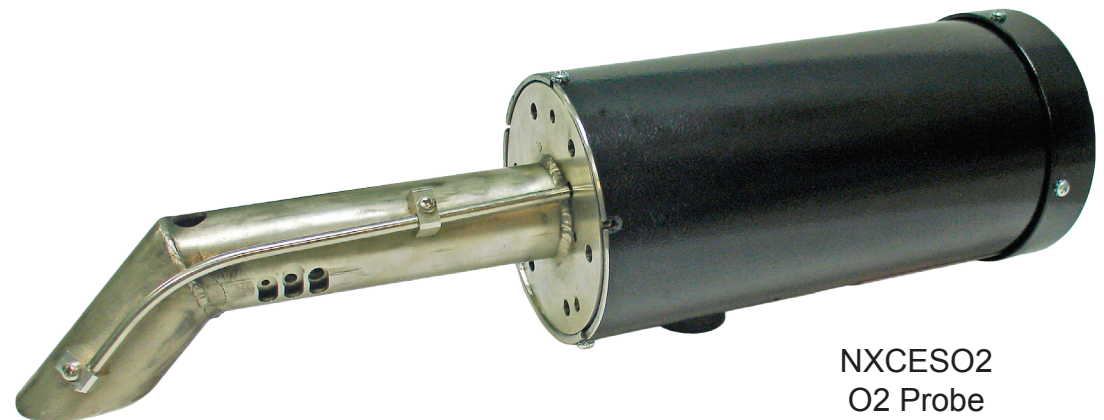
- Provides Continuous O2 readings
- Allows Control to Trim Air or Fuel Servo
- Provides Stack Temperature
- Field Replacable O2 Sensor Cartridge
- Data Available via Modbus-RTU
- Available in 8.5", 16" and 30" insertion depth
- Available Mounting Flange & Cover

AMBIENT AIR TEMPERATURE SENSOR

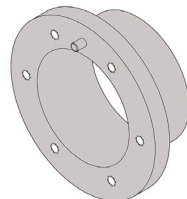


FXIATS-140: -40°F to 140°F (40°C to +60°C)

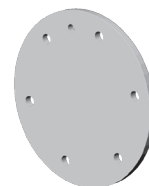
For use with burner/boiler efficiency calculations.



NXCESO2
O2 Probe



35-381-2
Mounting Flange



129-189
Flange Cover



The Combustion Control Specialists

3 Manchester Rd. • Derry, NH 03038 • USA
Tel: 603 - 432 - 4100 • Fax: 603 - 432 - 1570
www.fireeye.com